



# RLED-MasterRange

LED Range Lantern

Tideland's original RLED-MasterRange is a high intensity range based on the leading RLED-355 range lantern.

Our new development, RLED-MasterRange, provides exceptional performance in a panel mounting configuration.

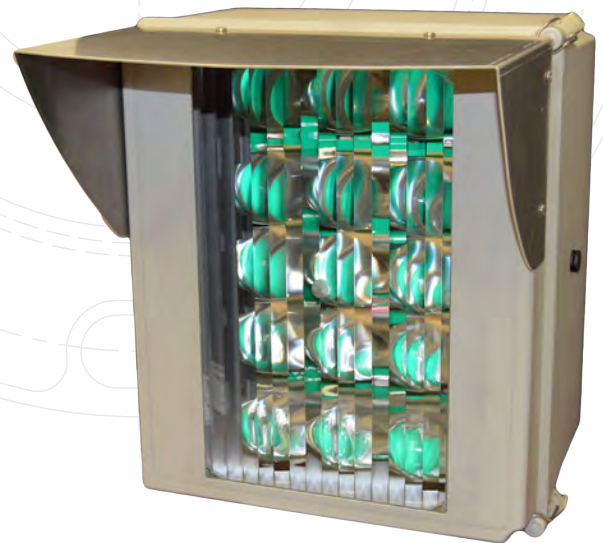
MasterRange is a versatile LED light panel that is available in 1, 2 or 3 panel assemblies that can provide ranges of up to 27NM. Each panel has options of 2 to 15 LED lenses providing optimum performance for any application.

Each housing is manufactured from marine resistant material and is rated at NEMA 4X. Mounting can be direct to a support structure or to an optional base plate.

This new assembly not only eliminates traditional lampchangers, it also eliminates costly mirrors and does not require focusing.

MasterRange is available with multiple numbers of LEDs, from 2 to 15, allowing for a wide range of effective intensities, with ranges up to 26NM night time and over 6NM during daylight.

RLED-MasterRange  
Single panel model



## OPTIONAL EQUIPMENT

- Optional hood assembly helps keep lens clear of dirt and bird droppings.
- Optional Tideland GPS based system, to maintain flash synchronisation of two or more range lanterns.

## FEATURES

- Supports all marine signaling industry standards.
- Utilises 1/4 inch thick transparent acrylic lens.
- Spreader lenses are available for varied horizontal divergences.
- Constructed of corrosion resistant, marine grade materials.
- Reliable in the severest of environments.
- All IALA approved colours are available.
- External sunswitch.
- Full monitor and control access.

	1 Panel (15 LED's)	2 Panel (30 LED's)	3 Panel (45 LED's)
White	24.5NM	26.3NM	27.4NM
Red	20.2NM	22.0NM	23.0NM
Green	21.2NM	23.0NM	24.0NM
Yellow	18.6NM	20.3NM	21.3NM

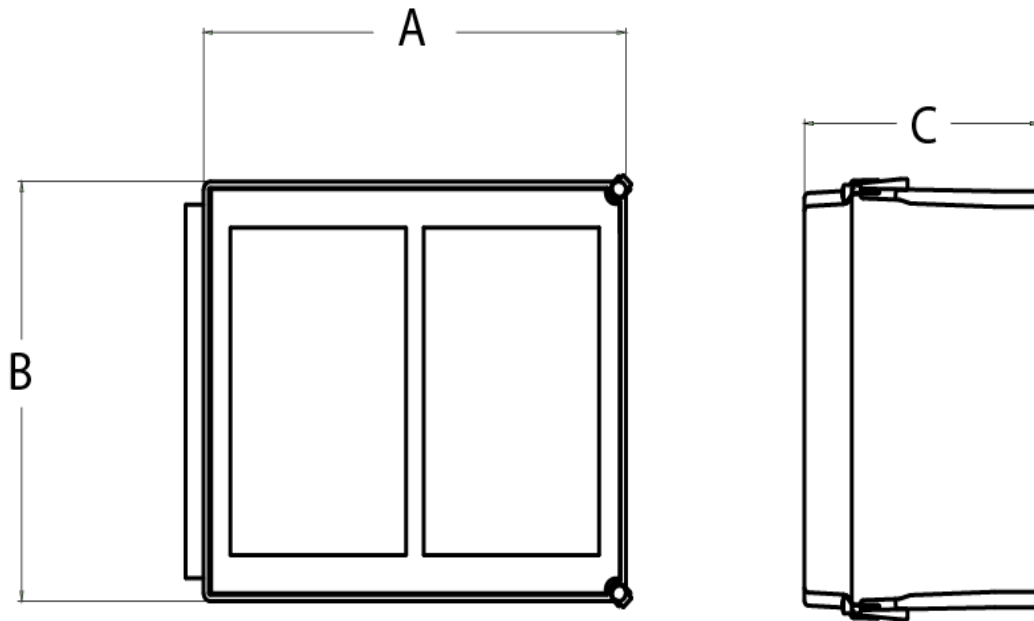
Ranges based upon 15 panel LED array, 2.6 degree vertical divergence, 2.5 degree horizontal divergence, full power and fixed flash. For options of LED's and vertical divergences up to 26 degrees please contact Tideland.

# SPECIFICATIONS

Applications	Leading light, short or long range; port traffic signal, night or day
Input Voltage	9 to 36VDC (optional mains power)
Input Power	Up to 45W for each panel
Vertical Divergence	2° to 3.1° (depending on colour)
Horizontal Beam Spreaders	3°, 8°, 11°, 20° or 28°
Mounting	Frame mounting as standard
Size - 1 Panel Fixture	A = 356mm, B = 305mm C = 203mm (14in x 12in x 8in)
Size - 2 Panel Fixture	A = 457mm, B = 406mm C = 254mm (18in x 16in x 10in)
Size - 3 Panel Fixture	A = 603mm, B = 372mm C = 271mm (23.7in x 14.6in x 10.6in)
Weight - 1 Panel fixture	8.2kg (18lbs)
Weight - 2 Panel fixture	15.4kg (34lbs)
Weight - 3 Panel fixture	18.1kg (40lbs)

NOTE: Specifications are subject to change.

## RLED-MasterRange



2 LED Panel Unit

### USA - HOUSTON

P: + 1 713 681 6101  
F: + 1 713 681 6233  
E: us-sales@tidelandsignal.com

### CANADA - DSS MARINE

P: + 844 843 3526  
F: + 613 680 7418  
E: canada-sales@tidelandsignal.com

### UK - BURGESS HILL

P: + 44 (0) 1444 872240  
F: + 44 (0) 1444 872241  
E: emea-sales@tidelandsignal.com

### UK - GT YARMOUTH

P: + 44 (0) 1493 441711  
F: + 44 (0) 1493 440322  
E: emea-sales@tidelandsignal.com

### UAE - DUBAI

P: + 971 (0) 4 885 5842  
F: + 971 (0) 4 885 7352  
E: emea-sales@tidelandsignal.com

### SINGAPORE

P: + 65 6333 0078  
F: + 65 6333 0079  
E: asia-sales@tidelandsignal.com

### CHINA

P: + 86 (0) 158 0223 7983 (primary)  
P: + 86 (0) 138 0101 4639  
E: asia-sales@tidelandsignal.com